

P31 0FT

CABLE
MANAGEMENT
SOLUTIONS FOR
OPTICAL FIBRE
CABLES



→ CATALOGUE PAGES INSIDE

THE GLOBAL SPECIALIST
IN ELECTRICAL AND DIGITAL BUILDING INFRASTRUCTURES

 **legrand**[®]

P31 OFT

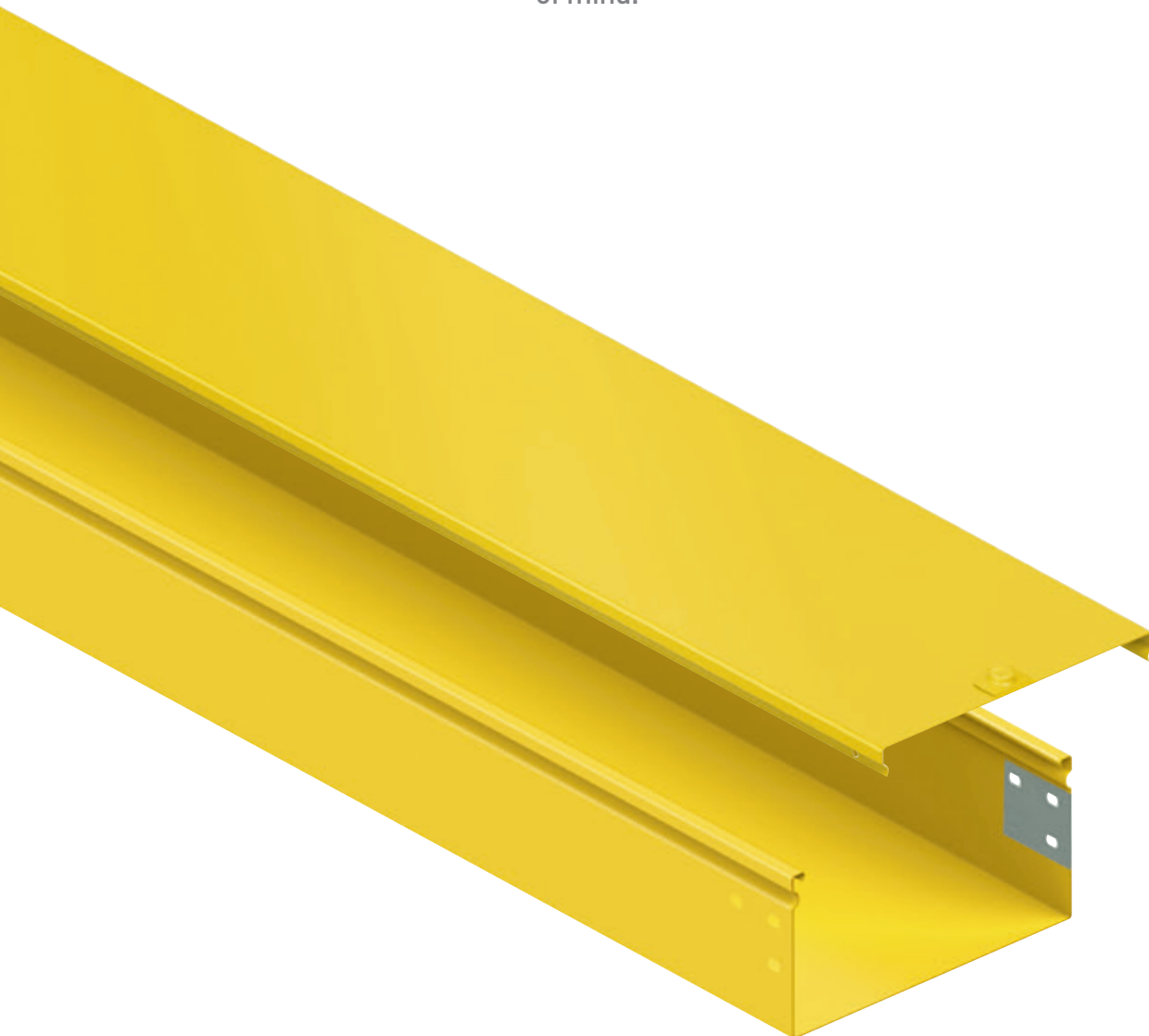
CABLE MANAGEMENT SOLUTIONS FOR OPTICAL FIBRE CABLES

New communication technologies have radically transformed commercial building design. Companies require increasingly larger, more powerful and more secure infrastructures to protect their digital data.

Specially designed to meet the requirements of data centres and banks, the new Legrand P31 OFT cable tray offer for optical fibre cables provides a high level of protection for both optical fibre and copper cables. It features a comprehensive range of products for building complex installations simply and securely.

Steel cable trays and accessories provide a high degree of strength and excellent withstand to heavy loads. In addition to its technical performance characteristics, the P31 OFT range offers the benefit of economies of scale across an entire installation.

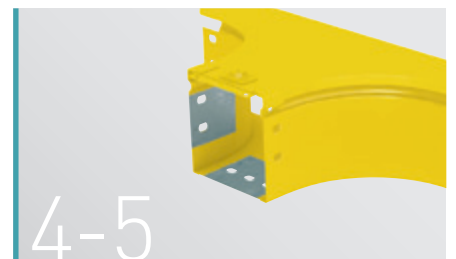
With P31 OFT, you are choosing security and ease of installation and offering your customers a sustainable solution and peace of mind.





2-3

Maximum cable protection



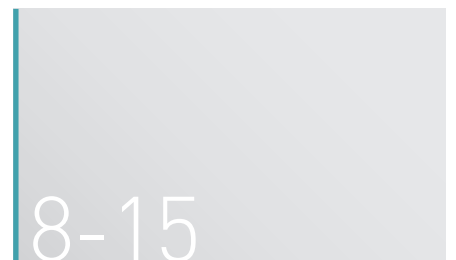
4-5

Accessories for even the most complex configurations



6-7

Safe, simple installation



8-15

Catalogue pages

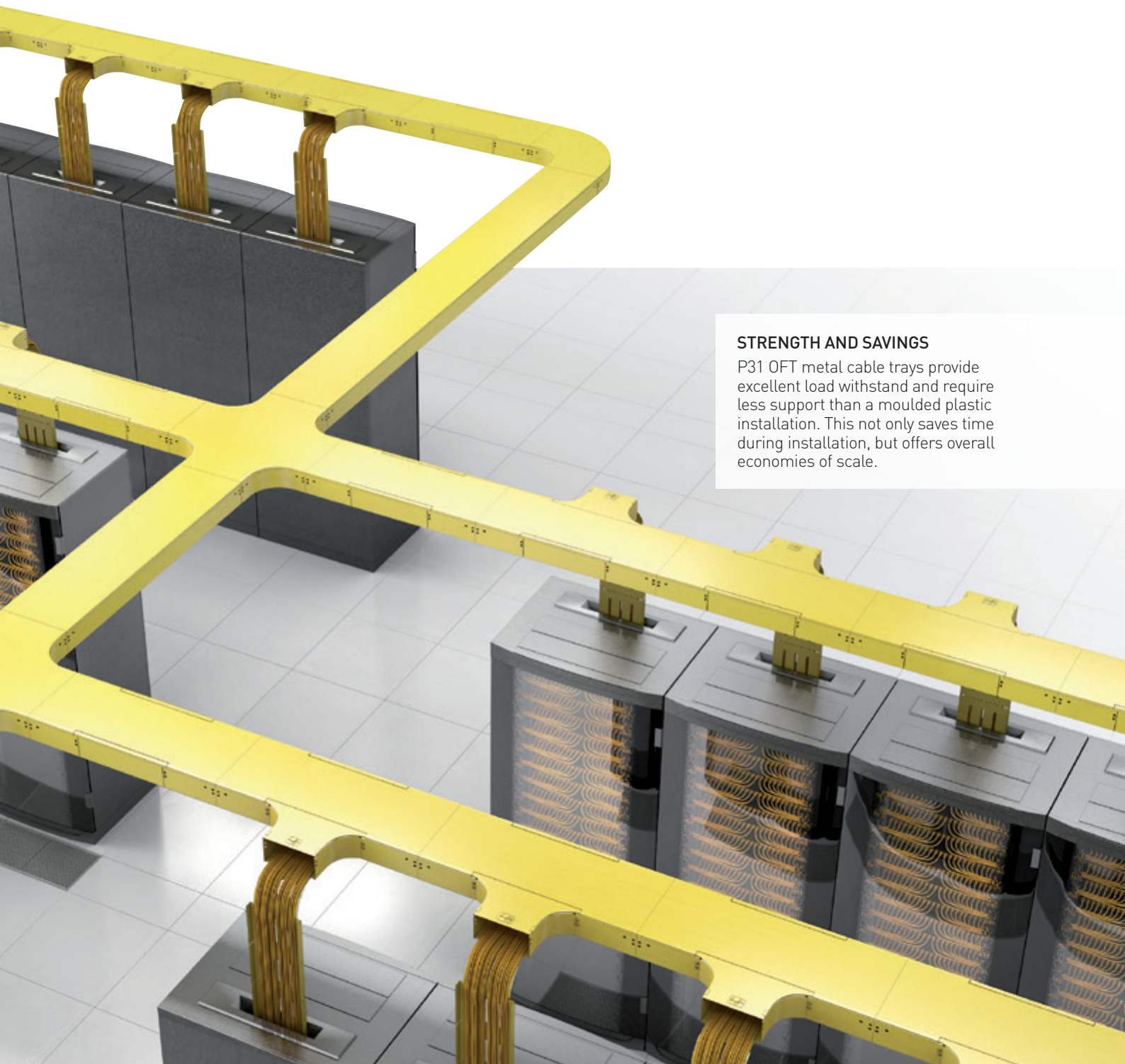
New P31 OFT

Well **protected**
cables

Specially designed for data centres and banks, the new P31 OFT range of cable trays for optical fibre and copper cables provides optimum protection for cables against the risk of crushing or cutting.

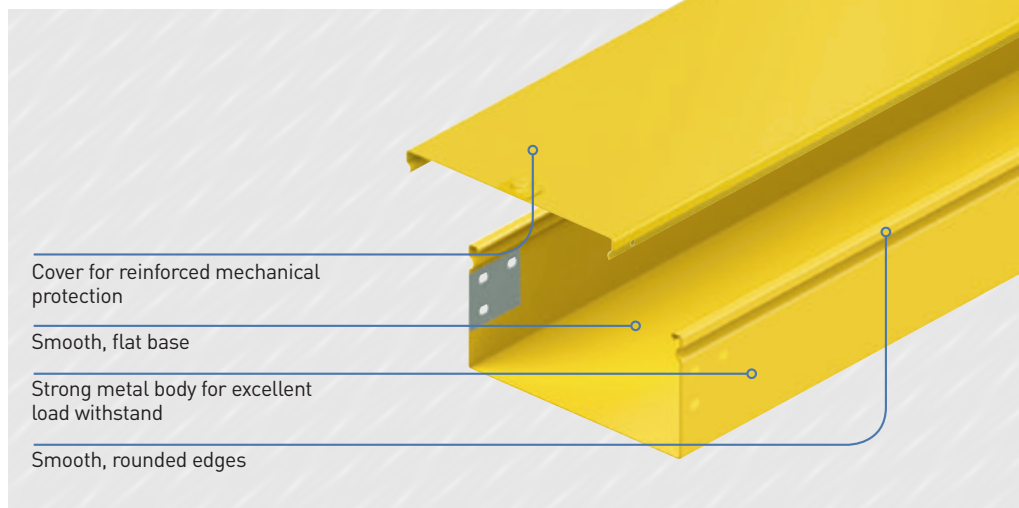
STRENGTH AND SAVINGS

P31 OFT metal cable trays provide excellent load withstand and require less support than a moulded plastic installation. This not only saves time during installation, but offers overall economies of scale.

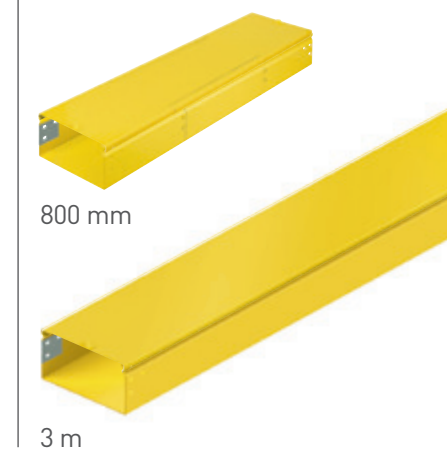


Excellent mechanical characteristics, flexibility and scalability

The 3 m rail length facilitates server rack distribution and improves installation scalability.



2 LENGTHS



2 STANDARD FINISHES



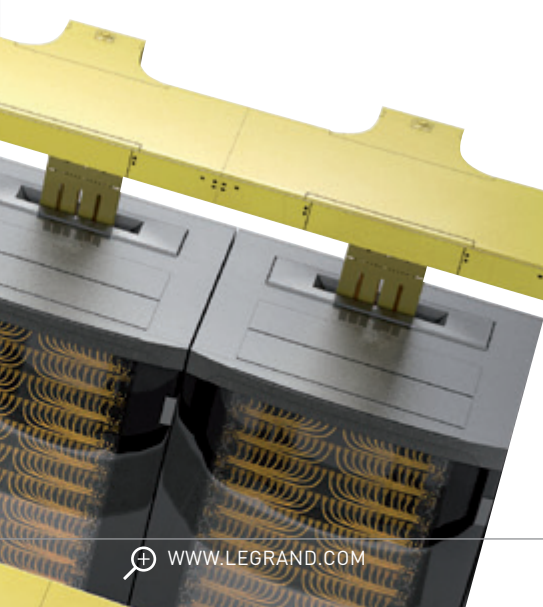
4 OTHER FINISHES AVAILABLE ON REQUEST

Using different coloured cable trays for each cable type (fire safety, data, etc.) makes it easy to identify the required network within a single installation.



DEDICATED ACCESSORIES

The whole range is designed to protect cables, by maintaining the bending radius, ensuring there are no sharp edges or acute angles, etc.

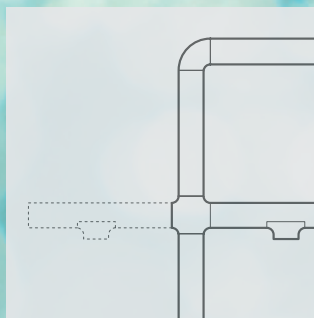


Simple or complex configurations

Solutions

for all
requirements

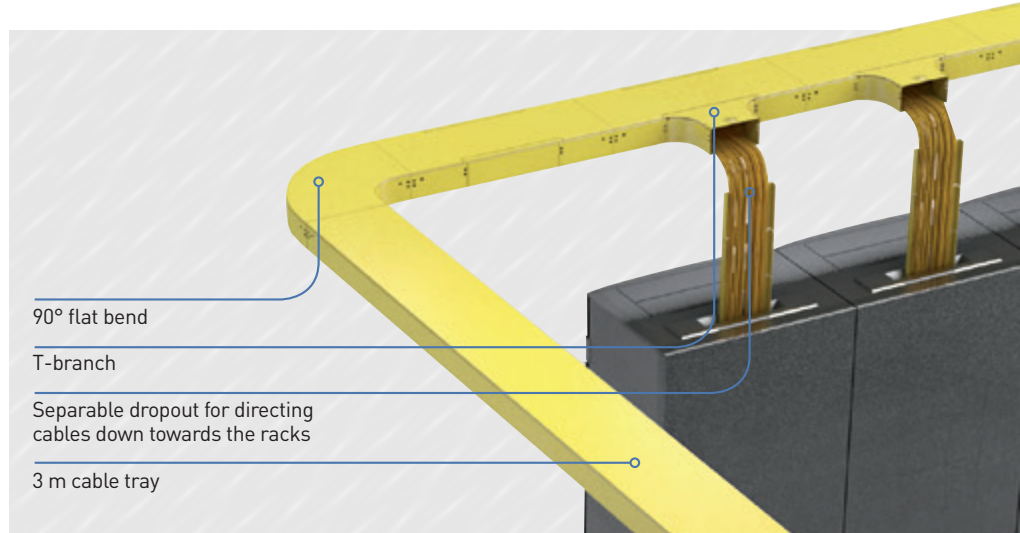
Designed to maintain the correct bending radius specified by the applicable standard, the accessories for changing direction ensure compliance with cable management requirements according to building size and architecture.



**FLEXIBLE, SCALABLE
INSTALLATIONS**

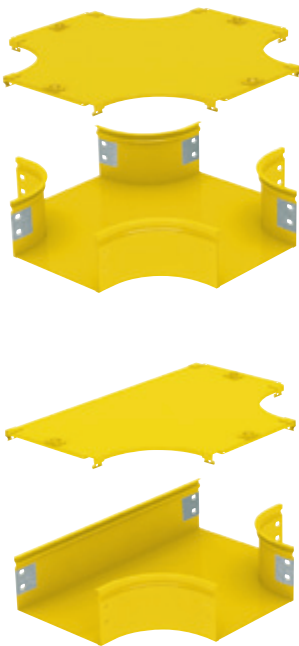
Accessories for changing direction allow installations to be adapted very easily in line with evolving user requirements.

Routing cables safely



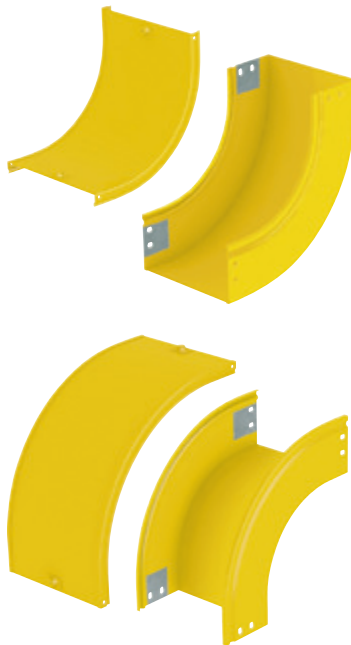
FLAT CROSS OR FLAT TEE

For routing cables easily at the crossing of two cable trays.



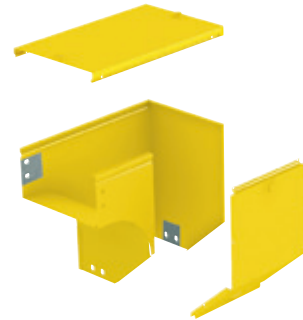
RISERS

Inside or outside risers.



VERTICAL ELBOWS

Supplied with covers



REDUCER

For joining 2 different-sized cable trays.



A complete system
Quick, safe and easy
to install

The build quality of the steel cable trays and accessories in the P31 OFT range allows for high-precision assembly by simply aligning the system components. Conventional tools are all that are required to install Legrand's cable tray system for optical fibre cables.



**PROTECTION AGAINST
ELECTROMAGNETIC INTERFERENCE**

Steel, the use of covers and earthing all help to reduce the risk of electromagnetic interference caused by mains voltage cables and prevent static electricity which can be generated by plastic materials.

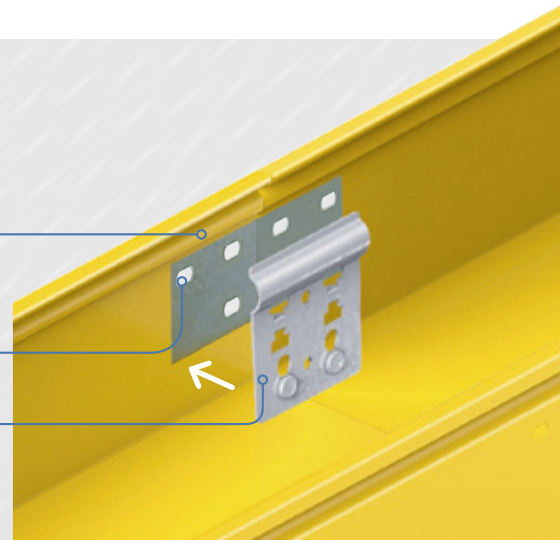
Practical, time-saving accessories

For building safe installations in next to no time, and in just the same way - conventional tools are all that are required for drilling and cutting.

Base joining section protected by an adhesive label during painting process to ensure electrical continuity between the cable trays (metal-to-metal contact)

Factory-drilled holes for easier cable tray assembly

Couplers for joining cable trays - electrical continuity ensured without the need for an additional accessory



ALIGNMENT PLATE

For perfectly aligned rails.



COUPLERS

Pre-crimped couplers save a significant amount of time during installation.



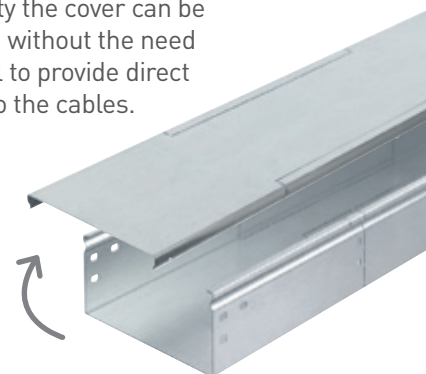
FIXING BRACKETS, SUSPENSION BRACKETS

A wide range of fixing and suspension accessories facilitate rail installation.



REMOVABLE COVER

For ease of maintenance and scalability the cover can be removed without the need for a tool to provide direct access to the cables.

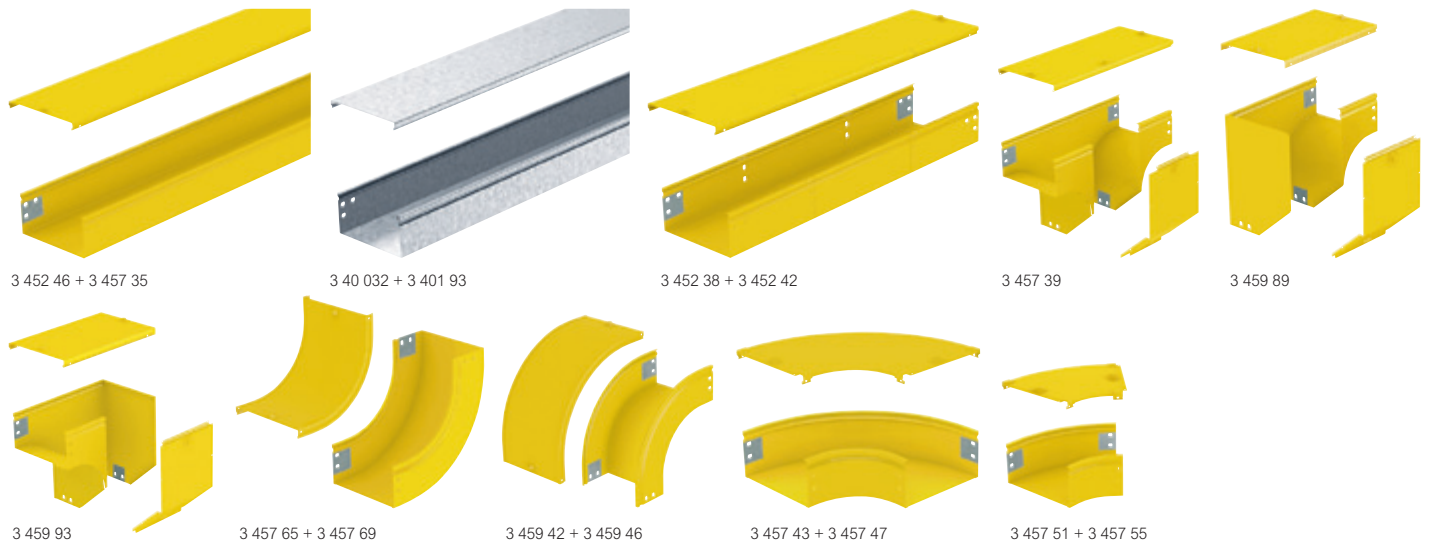


DIVIDERS

For creating compartments quickly inside cable trays according to the type of network being routed within a single installation.



P31 OFT cable trays for optical fibre cables

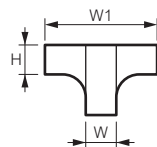


Technical characteristics p. 13-15

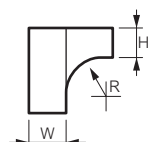
Pack	Cat.Nos		Cable tray - length 3 m		
			Base	Height	Width
8	3 452 45	3 400 30		H (mm)	W (mm)
4	3 452 46	3 400 32		100	100
4	3 452 47	3 400 33		100	200
				100	300
			Cover	Width	
				W (mm)	
12	3 457 34	3 401 91		100	
12	3 457 35	3 401 93		200	
12	3 457 36	3 401 94		300	

Pack	Cat.Nos		Cable tray - length 800 mm		
			Base	Height	Width
2	3 452 37	3 412 37		H (mm)	L (mm)
2	3 452 38	3 412 38		100	100
2	3 452 39	3 412 39		100	200
				100	300
			Cover	Width	
				W (mm)	
2	3 452 41	3 412 41		100	
2	3 452 42	3 412 42		200	
2	3 452 43	3 412 43		300	

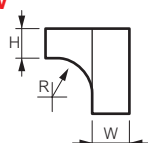
Pack	Cat.Nos		Vertical tee		
			Supplied with cover		
1	3 457 38	3 417 38	Height	Width	Width
1	3 457 39	3 417 39	H (mm)	L (mm)	L1 (mm)
1	3 457 40	3 417 40	100	100	360
			100	200	460
			100	300	560



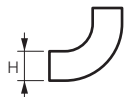
Pack	Cat.Nos		Right-hand vertical elbow		
			Supplied with cover		
1	3 459 88	3 419 88	Height	Width	Radius
1	3 459 89	3 419 89	H (mm)	L (mm)	R (mm)
1	3 459 90	3 419 90	100	100	360
			100	200	460
			100	300	560



Pack	Cat.Nos		Left-hand vertical elbow		
			Supplied with cover		
1	3 459 92	3 419 92	Height	Width	Radius
1	3 459 93	3 419 93	H (mm)	L (mm)	R (mm)
1	3 459 94	3 419 94	100	100	360
			100	200	460
			100	300	560



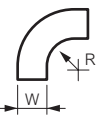
Pack	Cat.Nos		Inside riser		
			Base	Height	Width
1	3 457 64	3 409 95		H (mm)	W (mm)
1	3 457 65	3 409 97		100	100
1	3 457 66	3 409 98		100	200
				100	300
			Cover	Width	
				W (mm)	
1	3 457 68	3 411 75		100	
1	3 457 69	3 408 94		200	
1	3 457 70	3 408 95		300	



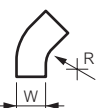
Pack	Cat.Nos		Outside riser		
			Base	Height	Width
1	3 459 41	3 410 54		H (mm)	W (mm)
1	3 459 42	3 410 56		100	100
1	3 459 43	3 410 57		100	200
				100	300
			Cover	Width	
				W (mm)	
1	3 459 45	3 401 81		100	
1	3 459 46	3 408 25		200	
1	3 459 47	3 408 26		300	



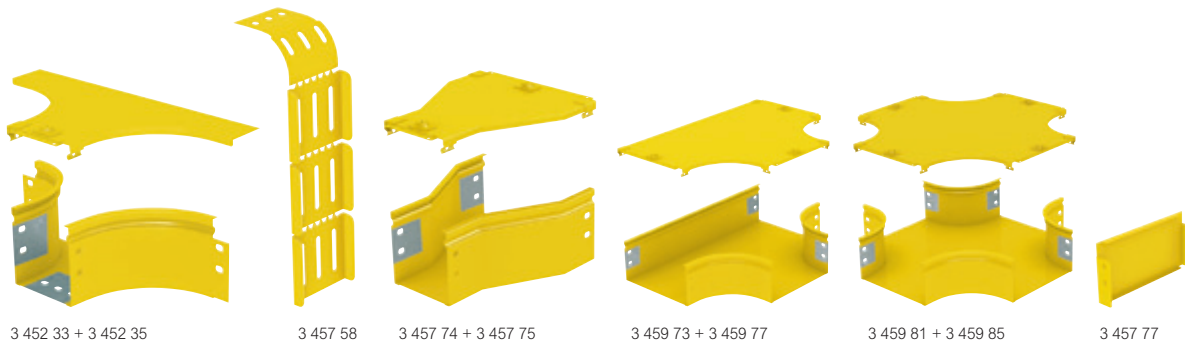
Pack	Cat.Nos		90° flat bend			
			Base	Height	Width	Radius
2	3 457 42	3 409 30		H (mm)	L (mm)	R (mm)
2	3 457 43	3 409 32		100	100	244
2	3 457 44	3 409 33		100	200	244
				100	300	244
			Cover	Width		
				L (mm)		
2	3 457 46	3 408 63		100		
2	3 457 47	3 408 65		200		
2	3 457 48	3 408 66		300		



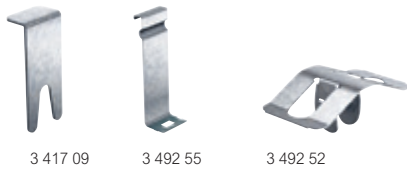
Pack	Cat.Nos		45° flat bend			
			Base	Height	Width	Radius
2	3 457 50	3 409 60		H (mm)	L (mm)	R (mm)
2	3 457 51	3 409 62		100	100	100
2	3 457 52	3 409 63		100	200	100
				100	300	100
			Cover	Width		
				L (mm)		
2	3 457 54	3 408 72		100		
2	3 457 55	3 408 74		200		
2	3 457 56	3 408 75		300		



P31 OFT cable trays for optical fibre cables (continued)



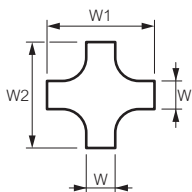
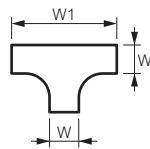
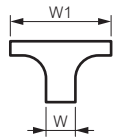
3 452 33 + 3 452 35 3 457 58 3 457 74 + 3 457 75 3 459 73 + 3 459 77 3 459 81 + 3 459 85 3 457 77



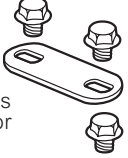
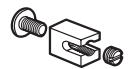
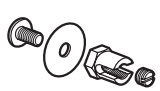
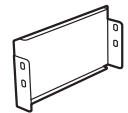
3 417 09 3 492 55 3 492 52

Technical characteristics p. 13-15

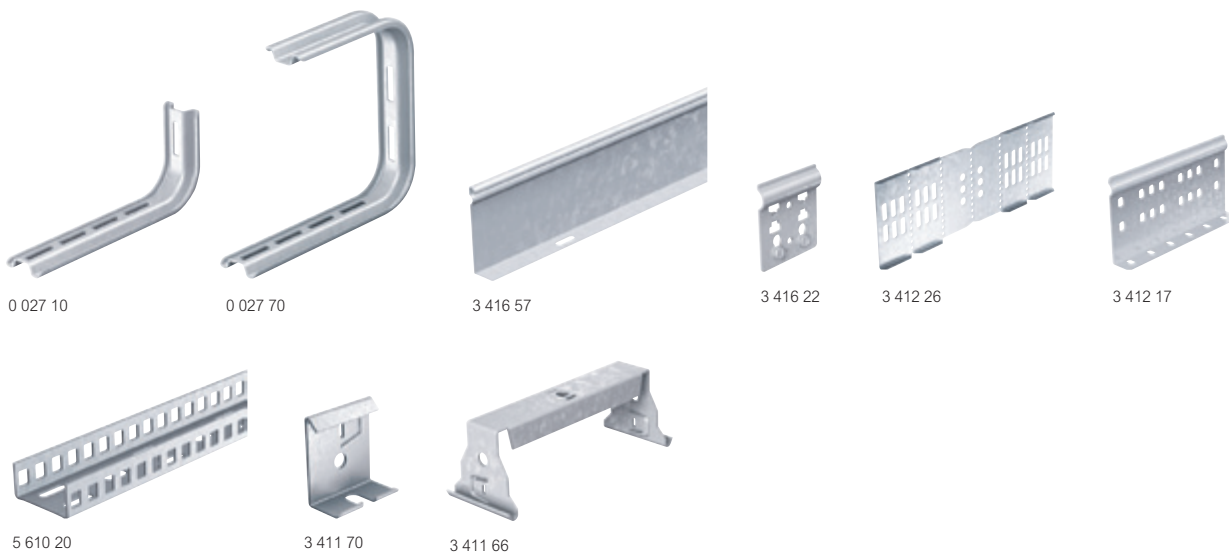
Pack	Cat.Nos		T-branch		
2			Base Height H (mm) 100	Width L1 (mm) 100	Length L2 (mm) 360
	Yellow 3 452 33	GS 3 412 33			
2	3 452 35	3 412 35	Cover Width L (mm) 100		
2			Dropout Width W (mm) 100		
	Yellow 3 457 58	GS 3 417 58			
2			Reducer Height H (mm) 100	Width L1 (mm) 300	Width L2 (mm) 200
	Yellow 3 457 72	GS 3 417 72			
2	3 457 74	3 417 74	100	200	100
2	3 457 73	3 417 73	Cover For 300 to 200 mm wide base		
2	3 457 75	3 417 75	For 200 to 100 mm wide base		
2			Flat tee Height H (mm) 100	Width L (mm) 100	Length L1 (mm) 360
	Yellow 3 459 72	GS 3 411 19			
2	3 459 73	3 411 21	100	200	460
2	3 459 74	3 411 22	100	300	560
2	3 459 76	3 408 81	Cover Width L (mm) 100		
2	3 459 77	3 408 83	200		
2	3 459 78	3 408 84	300		
1			Flat cross Height H (mm) 100	Width L (mm) 100	Length L1 (mm) 360
	Yellow 3 459 80	GS 3 411 49			
1	3 459 81	3 411 51	100	200	460
1	3 459 82	3 411 52	100	300	560
1	3 459 84	3 407 58	Cover Width L (mm) 100		
1	3 459 85	3 407 68	200		
1	3 459 86	3 407 69	300		



Pack	Cat.Nos		End stop	
1			Base Height H (mm) 100	Width L (mm) 100
	Yellow 3 457 76	GS 3 416 59		
	3 457 77	3 416 61		
1	3 457 78	3 416 62	100	300
50			Clips Fastening clips Fastening clip for cover Fastening clip for trunking For easy dismantling of the cover and for holding the base securely on the brackets	
	20	3 417 09 3 492 55		
50			Tray hold down clip For fixing the tray on bracket, without using bolts and nuts Ideal for fixing bases to perforated brackets, width of oblong 8 mm	
10			Earthing terminals Brass sheet terminals 6 x 16 6 x 35	
10				
25			Aluminium terminals BAT 35 terminals	
50			Electrical continuity accessories Electrical continuity kit for P31 OFT cable trays Consists of: - one copper strip - 2 M5 x 6 hexagonal head bolts M5 x 6 hexagonal head bolts for electrical continuity kit Cat.No 3 417 08	
	500			



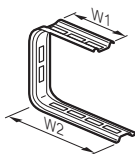
P31 OFT cable trays for optical fibre cables - accessories



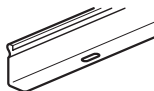
Pack	Cat.Nos	Wall bracket
40	0 027 00	For fixing cable trays to the wall Width 100 mm
20	0 027 10	Width 200 mm
10	0 027 20	Width 300 mm



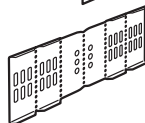
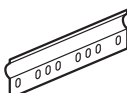
Pack	Cat.Nos	Ceiling bracket
20	0 027 60	Width L1 130 mm Width L2 145 mm
20	0 027 70	Width L1 180 mm Width L2 245 mm
20	0 027 80	Width L1 230 mm Width L2 345 mm



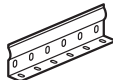
Pack	Cat.Nos	Divider
12	3 416 57	Divider Height 100 mm - length 3 m



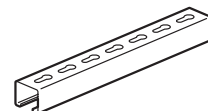
Pack	Cat.Nos	Couplers
50	3 412 16	Flat coupler, height 100 mm Length 180 mm
12	3 416 22	Fast coupler, height 75 mm For fittings - screw connection Length 60 mm Supplied with bolts and nuts
8	3 412 26	Multifunction coupler, height 100 mm



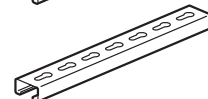
Pack	Cat.Nos	Suspension brackets
50	3 412 17	Square coupler, height 96 mm Length 180 mm



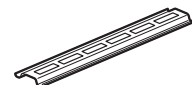
Pack	Cat.Nos	Support profiles
3	5 955 40	Channel supports 41 x 41 mm Length 3 m



3	5 973 20	41 x 21 mm Length 3 m
---	----------	--------------------------



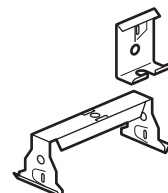
Pack	Cat.Nos	Rail
1	0 029 40	Width 51 mm Length 3 m



Pack	Cat.Nos	EDF profile
3	5 610 20	Length 3 m
2	5 610 10	Length 2 m
1	5 610 90	Length 1 m



Pack	Cat.Nos	Suspension brackets
50	3 411 70	For all cable tray widths Reinforced 2500 N
10	3 411 64	Width 100 mm
10	3 411 66	Width 200 mm
12	3 411 67	Width 300 mm



P31 OFT cable trays for optical fibre cables - accessories and fixings



Pack	Cat.Nos	Alignment plate
10	3 415 04	For cable trays width 200 mm (width of plate 100 mm)
10	3 415 05	For cable trays width 300 mm (width of plate 200 mm)
1	0 111 00	FAS roller case To help pull cables inside the cable tray Comprises: - 6 rollers - 6 fixing plates - 6 external fixing clamps
1	5 223 54	Edge protection strip Black Supplied in packs of 5 m
1	5 596 77	Cable ties "Hook & loop" cable tie Black Supplied in packs of 5 m
50	8 091 09	15 x 180 mm cable tie
50	8 091 19	15 x 225 mm cable tie
50	8 091 29	15 x 320 mm cable tie

Pack	Cat.Nos	Accessories
100	8 010 01	Nuts and bolts M6 x 12 bolt and nuts
100	8 010 11	M6 x 20 bolt and nuts
20	8 017 01	Threaded rods Length 1 m Ø 6 mm
20	8 017 11	Ø 8 mm
20	8 017 21	Ø 10 mm
50	8 017 41	Threaded connectors M6 x 20
50	8 017 51	M8 x 20
50	8 017 71	M10 x 30
100	8 015 01	Flat washers Ø 6 mm
100	8 015 11	Ø 8 mm
100	8 015 21	Ø 10 mm
100	8 012 01	Nuts M6
100	8 012 11	M8
100	8 012 21	M10
100	8 010 61	M6
100	8 016 11	M8
100	8 016 21	M10

P31 OFT cable trays for optical fibre cables

Selection chart

		CABLE TRAY DIMENSIONS (HEIGHT X WIDTH)											
		100 X 100 mm		100 X 200 mm		100 X 300 mm							
		Length 3 m	Length 800 mm	Length 3 m	Length 800 mm	Length 3 m	Length 800 mm						
		Yellow	GS	Yellow	GS	Yellow	GS						
	Base	3 452 45	3 400 30	3 452 37	3 412 37	3 452 46	3 400 32	3 452 38	3 412 38	3 452 47	3 400 33	3 452 39	3 412 39
	Cover	3 457 34	3 401 91	3 452 41	3 412 41	3 457 35	3 401 93	3 452 42	3 412 42	3 457 36	3 401 94	3 452 43	3 412 43
		CHOICE OF ROUTING ACCESSORIES											
		Yellow	GS	Yellow	GS	Yellow	GS						
	Vertical tee	3 457 38	3 417 38	3 457 39	3 417 39	3 457 40	3 417 40						
	Right-hand vertical elbow	3 459 88	3 419 88	3 459 89	3 419 89	3 459 90	3 419 90						
	Left-hand vertical elbow	3 459 92	3 419 92	3 459 93	3 419 93	3 459 94	3 419 94						
	Inside riser + cover	3 457 64 + 3 457 68	3 409 95 + 3 411 75	3 457 65 + 3 457 69	3 409 97 + 3 408 94	3 457 66 + 3 457 70	3 409 98 + 3 408 95						
	Outside riser + cover	3 459 41 + 3 459 45	3 410 54 + 3 401 81	3 459 42 + 3 459 46	3 410 56 + 3 408 25	3 459 43 + 3 459 47	3 410 57 + 3 408 26						
	90° flat bend + cover	3 457 42 + 3 457 46	3 409 30 + 3 408 63	3 457 43 + 3 457 47	3 409 32 + 3 408 65	3 457 44 + 3 457 48	3 409 33 + 3 408 66						
	45° flat bend + cover	3 457 50 + 3 457 54	3 409 60 + 3 408 72	3 457 51 + 3 457 55	3 409 62 + 3 408 74	3 457 52 + 3 457 56	3 409 63 + 3 408 75						
	T-branch + cover	3 452 33 + 3 452 35	3 412 33 + 3 412 35	3 452 33 + 3 452 35	3 412 33 + 3 412 35	3 452 33 + 3 452 35	3 412 33 + 3 412 35						
	Flat tee	3 459 72 + 3 459 76	3 411 19 + 3 408 81	3 459 73 + 3 459 77	3 411 21 + 3 408 83	3 459 74 + 3 459 78	3 411 22 + 3 408 84						
	Cross + cover	3 459 80 + 3 459 84	3 411 49 + 3 407 58	3 459 81 + 3 459 85	3 411 51 + 3 407 68	3 459 82 + 3 459 86	3 411 52 + 3 407 69						
	End stop	3 457 76	3 416 59	3 457 77	3 416 61	3 457 78	3 416 62						

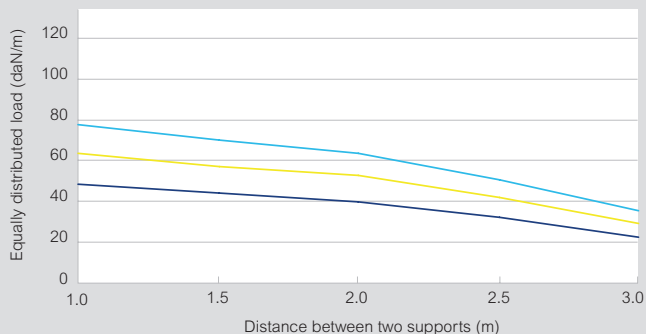
P31 OFT cable trays for optical fibre cables

Standards

Cable management complies with IEC 61537
 This standard details the configurations for the mechanical tests to be performed on the cable trays and supports, as well as the issues of electrical continuity and corrosion
 Standard NFC 15-100 applies to installation

Safe working load

Cable tray - H = 100 mm

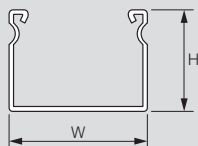


W = 100 mm
 W = 200 mm
 W = 300 mm

The tests were carried out in accordance with IEC 61 537 standard, for the type 1

Dimensions

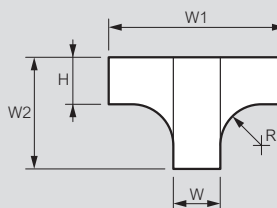
Cable trays - length 3 m and 800 mm



Cat.Nos	Dimensions (mm)	
	H	W
3 452 45	100	100
3 452 46	100	200
3 452 47	100	300
3 400 30	100	100
3 400 32	100	200
3 400 33	100	300
3 452 37	100	100
3 452 38	100	200
3 452 39	100	300
3 412 37	100	100
3 412 38	100	200
3 412 39	100	300

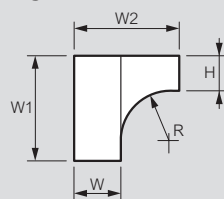
Dimensions (continued)

Vertical tee



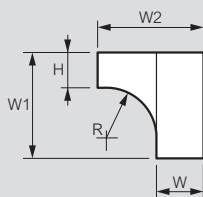
Cat.Nos	Dimensions (mm)					Weight Kg
	H	W	R	W1	W2	
3 457 38	100	100	100	360	230	1.6
3 457 39	100	200	100	460	290	2.6
3 457 40	100	300	100	560	350	4.5
3 417 38	100	100	100	360	230	1.6
3 417 39	100	200	100	460	290	2.6
3 417 40	100	300	100	560	350	4.5

Right-hand vertical elbow



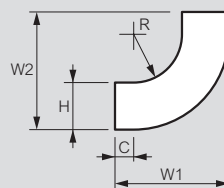
Cat.Nos	Dimensions (mm)					Weight Kg
	H	W	R	W1	W2	
3 459 88	100	100	100	230	230	1.17
3 459 89	100	200	100	290	330	2.53
3 459 90	100	300	100	350	430	4.42
3 419 88	100	100	100	230	230	1.17
3 419 89	100	200	100	290	330	2.53
3 419 90	100	300	100	350	430	4.42

Left-hand vertical elbow



Cat.Nos	Dimensions (mm)					Weight Kg
	H	W	R	W1	W2	
3 459 92	100	100	100	230	230	1.52
3 459 93	100	200	100	290	330	3.48
3 459 94	100	300	100	350	430	6.24
3 419 92	100	100	100	230	230	1.52
3 419 93	100	200	100	290	330	3.48
3 419 94	100	300	100	350	430	6.24

Inside riser

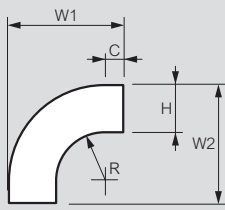


Cat.Nos	Dimensions (mm)						Weight Kg
	H	W	R	W1	W2	C	
3 457 64	100	100	150	301	301	50	1.12
3 457 65	100	200	150	301	301	50	1.51
3 457 66	100	300	150	301	301	50	1.85
3 409 95	100	100	150	301	301	50	1.12
3 409 97	100	200	150	301	301	50	1.51
3 409 98	100	300	150	301	301	50	1.85

P31 OFT cable trays for optical fibre cables

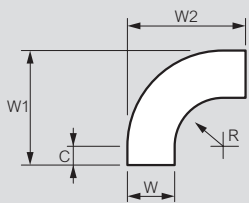
■ Dimensions (continued)

Outside riser



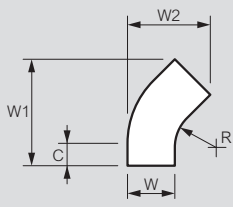
Cat.Nos	Dimensions (mm)						Weight Kg
	H	W	R	W1	W2	C	
3 459 41	100	100	150	301	301	50	1.50
3 459 42	100	200	150	301	301	50	2.06
3 459 43	100	300	150	301	301	50	2.64
3 410 54	100	100	150	301	301	50	1.50
3 410 56	100	200	150	301	301	50	2.06
3 410 57	100	300	150	301	301	50	2.64

90° flat bend



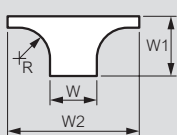
Cat.Nos	Dimensions (mm)						Weight Kg
	W	R	W1	W2	C	Kg	
3 457 42	100	100	230	230	30	0.75	
3 457 43	200	100	330	330	30	1.36	
3 457 44	300	100	430	430	30	2.16	
3 409 30	100	100	230	230	30	0.75	
3 409 32	200	100	330	330	30	1.36	
3 409 33	300	100	430	430	30	2.16	

45° flat bend



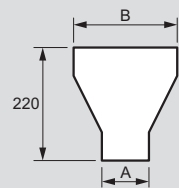
Cat.Nos	Dimensions (mm)						Weight Kg
	W	R	W1	W2	C	Kg	
3 457 50	100	100	193	151	30	0.43	
3 457 51	200	100	263	251	30	0.68	
3 457 52	300	100	334	351	30	1.01	
3 409 60	100	100	193	151	30	0.43	
3 409 62	200	100	263	251	30	0.68	
3 409 63	300	100	334	351	30	1.01	

T-branch



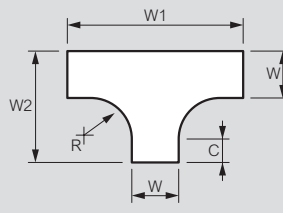
Cat.Nos	Dimensions (mm)				Weight Kg
	W	R	W1	W2	
3 452 33	100	100	180	358	1.00
3 412 33	100	100	180	358	1.00

Reducer



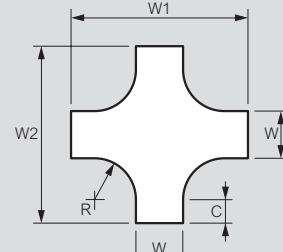
Cat.Nos	Dimensions (mm)		Weight Kg
	A	B	
3 457 72	200	300	1.66
3 457 74	100	200	1.33
3 417 72	200	300	1.66
3 417 74	100	200	1.33

Flat tee



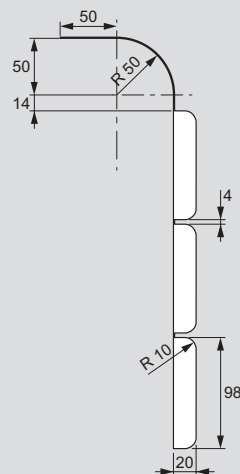
Cat.Nos	Dimensions (mm)						Weight Kg
	W	R	W1	W2	C	Kg	
3 459 72	100	100	360	230	30	1.19	
3 459 73	200	100	460	330	30	1.79	
3 459 74	300	100	560	430	30	2.59	
3 411 19	100	100	360	230	30	1.19	
3 411 21	200	100	460	330	30	1.79	
3 411 22	300	100	560	430	30	2.59	

Flat cross



Cat.Nos	Dimensions (mm)						Weight Kg
	W	R	W1	W2	C	Kg	
3 459 80	100	100	360	360	30	1.42	
3 459 81	200	100	460	460	30	2.19	
3 459 82	300	100	560	560	30	3.14	
3 411 49	100	100	360	360	30	1.42	
3 411 51	200	100	460	460	30	2.19	
3 411 52	300	100	560	560	30	3.14	

Dropout Cat.Nos 3 457 58 and 3 417 58



Cable capacity

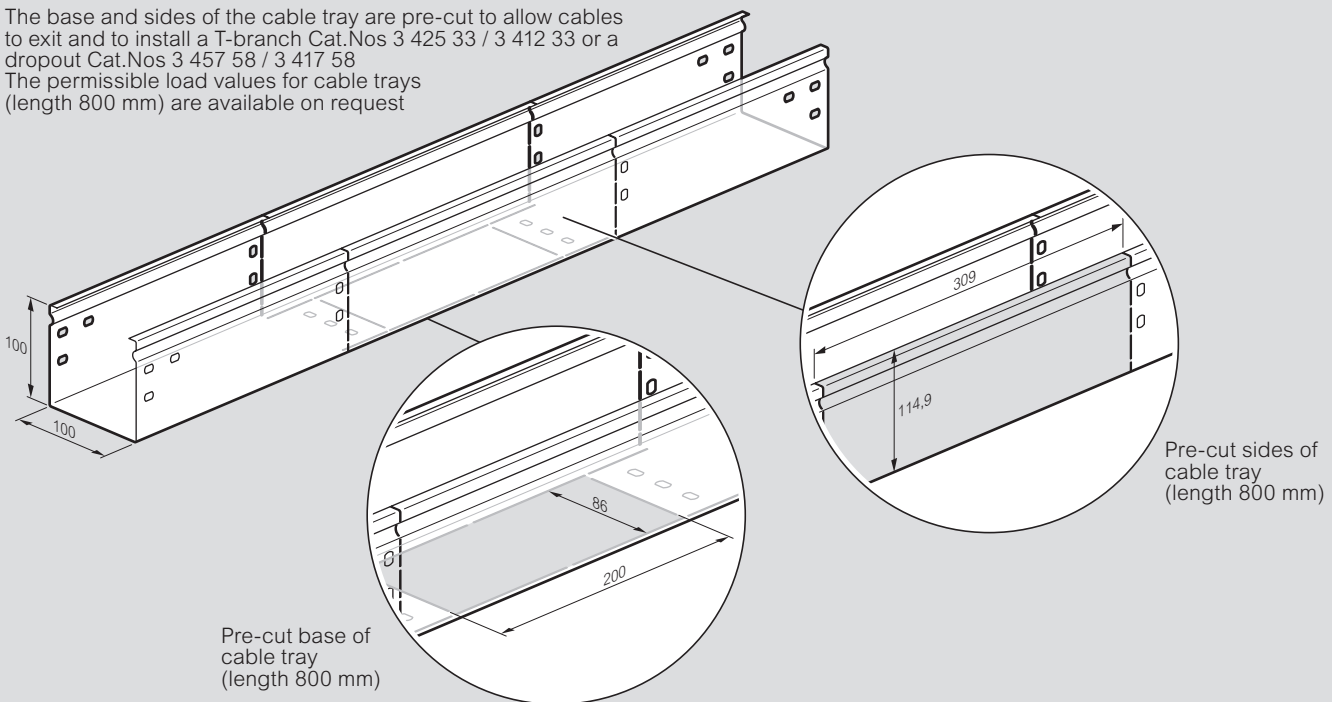
Dimensions H x W (mm)	Maximum number of cables (for a given cable type and a load factor of 50%)					
	Optical fibre			Copper		
	Ø 1.6 mm	Ø 2 mm	Ø 3 mm	Cat. 5e Ø 4.32 mm	Cat. 6 Ø 6.1 mm	Cat. 6A Ø 7.6 mm
100 x 100	2486	1581	709	341	171	110
100 x 200	4927	3162	1417	683	343	219
100 x 300	7459	4743	2126	1024	514	329

The values given in the table are calculated for a load factor of 50% for the most common cable diameters. For more accurate results, use the actual diameter stated by the cable manufacturer

Installation principle

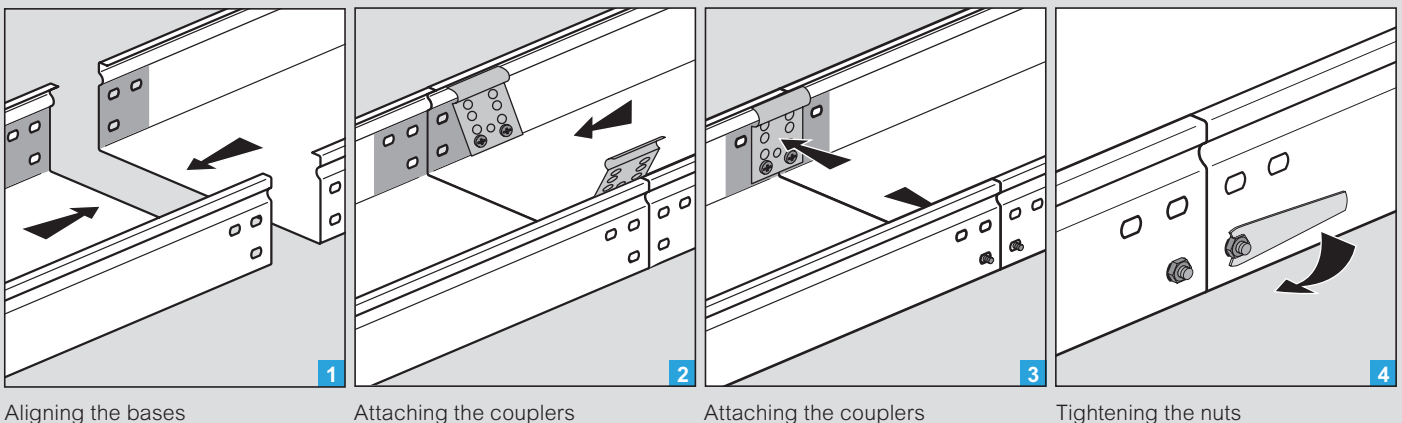
Cable tray - length 800 mm

The base and sides of the cable tray are pre-cut to allow cables to exit and to install a T-branch Cat.Nos 3 425 33 / 3 412 33 or a dropout Cat.Nos 3 457 58 / 3 417 58
The permissible load values for cable trays (length 800 mm) are available on request



Electrical continuity

The point at which the couplers are attached to the cable tray is left unpainted
This ensures electrical continuity automatically when the couplers are attached, through the direct contact of two metal surfaces



Aligning the bases

Attaching the couplers

Attaching the couplers

Tightening the nuts

Catalogue number index

Cat. No	Page	Pack	Cat. No	Page	Pack	Cat. No	Page	Pack	Cat. No	Page	Pack	Cat. No	Page	Pack	Cat. No	Page	Pack
0 027 00			3 411 49	9	1	3 417 73	9	2	3 457 47	8	2	3 459 77	9	2	5 853 57	9	10
0 027 00	10	40	51	-	1	74	-	2	48	-	2	78	-	2	67	-	10
10	-	20	52	-	1	75	-	2	50	-	2	80	-	1	5 950 00		
20	-	10	64	10	10	3 419 88	8	1	51	-	2	81	-	1	5 955 40	10	3
60	-	20	66	-	10	89	-	1	52	-	2	82	-	1	5 970 00		
70	-	20	67	-	12	90	-	1	54	-	2	84	-	1	5 973 20	-	3
80	-	20	70	-	50	92	-	1	55	-	2	85	-	1	8 010 00		
0 029 40	-	1	3 412 16	-	50	93	-	1	56	-	2	86	-	1	8 010 01	11	100
0 110 00			17	-	50	94	-	1	58	9	2	88	8	1	11	-	100
0 111 00	11	1	26	-	8	3 450 00			64	8	1	89	-	1	61	-	100
3 400 00			33	9	2	3 452 33	9	2	65	-	1	90	-	1	8 012 01	-	100
3 400 30	8	8	35	-	2	35	-	2	66	-	1	92	-	1	11	-	100
32	-	4	37	8	2	37	8	2	68	-	1	93	-	1	8 015 01	-	100
33	-	4	38	-	2	38	-	2	69	-	1	94	-	1	11	-	100
3 401 91	-	12	39	-	2	39	-	2	70	-	1	3 490 00			21	-	100
93	-	12	41	-	2	41	-	2	72	9	2	3 492 52	9	50	8 016 11	-	100
94	-	12	42	-	2	42	-	2	73	-	2	55	-	20	21	-	100
3 407 58	9	1	43	-	2	43	-	2	74	-	2	5 220 00			8 017 01	-	100
68	-	1	3 415 04	11	10	45	-	8	75	-	2	5 223 54	11	1	11	-	100
69	-	1	05	-	10	46	-	4	76	-	1	5 590 00			21	-	100
3 408 81	-	2	3 416 22	10	12	47	-	4	77	-	1	5 596 77	-	1	41	-	100
83	-	2	57	-	12	3 457 34	-	12	78	-	1	5 610 00			51	-	100
84	-	2	59	9	1	35	-	12	3 459 41	8	1	5 610 10	10	2	71	-	100
3 410 00			61	-	1	36	-	12	42	-	1	20	-	3	8 090 00		
3 411 19	9	2	62	-	1	38	-	1	45	-	1	90	-	1	8 091 09	11	50
21	-	2	3 417 09	-	50	39	-	1	46	-	1	5 850 00			19	-	50
22	-	2	38	8	1	40	-	1	47	-	1	5 853 30	9	25	29	-	50
			39	-	1	42	-	2	72	9	2						
			40	-	1	43	-	2	73	-	2						
			58	9	2	44	-	2	74	-	2						
			72	-	2	46	-	2	76	-	2						



FOLLOW US ALSO ON

@ www.legrand.com

 www.youtube.com/legrand

 [twitter.com/@legrand](https://twitter.com/legrand)



Head office

and International Department
87045 Limoges Cedex - France

Tel.: + 33 (0) 5 55 06 87 87

Fax: + 33 (0) 5 55 06 74 55